

Genomic and microbiology revolution: a commercial preview of the exhibition

The Annual Microbiology Conference hosted by the British Society for Microbial Technology has been the beneficiary of support and sponsorship from a range of relevant companies. With this year's return to a face-to-face event, the following commercial colleagues have grasped the opportunity to attend this important event.

Alpha Laboratories

Alpha Laboratories is a trusted supplier of clinical diagnostic kits and reagents to healthcare professionals in the UK. It partners with leading manufacturers worldwide to provide innovative, high-quality products that help improve the speed and accuracy of disease diagnosis so that effective treatment can be initiated speedily. This includes a broad range of lateral-flow assays (LFAs) that focus on improving detection of fungal infections.

The IMMY *sōna* *Aspergillus* Galactomannan provides qualitative detection of *Aspergillus* galactomannan in serum and bronchoalveolar lavage

(BAL) samples, providing a simplified test procedure and rapid turnaround time for the diagnosis of invasive aspergillosis.

In addition, the CrAg LFA is the first and only dipstick assay for the qualitative and semi-quantitative detection of the cryptococcal capsular antigen in serum, plasma and cerebrospinal fluid (CSF). It has revolutionised cryptococcal antigen testing, delivering excellent sensitivity across all serotypes of *Cryptococcus*.

Visit the Alpha team at the BSMT Annual Microbiological Conference to discuss the company's mycology assays in person.

www.alphalabs.co.uk/



The IMMY *sōna* *Aspergillus* Galactomannan LFA available from Alpha Laboratories.



BD Integrated Diagnostic Solutions is focused on delivering the right test on the right patient at the right time.

BD Integrated Diagnostic Solutions

With the aim of impacting clinical outcomes without sacrificing quality patient care, BD Integrated Diagnostic Solutions is focused on delivering the right test on the right patient at the right time, leading to the right results for the right clinical diagnosis.

When it comes to patient diagnosis, saving time changes lives. At BD, the team is advancing the world of health by partnering with healthcare professionals to transform the entire diagnostic pathway. The aim is to enable timely and accurate diagnosis through end-to-end integrated specimen management, clinical microbiology, and molecular solutions.

The company's goal is to help you maximise your laboratory performance and efficiencies, optimise and standardise workflows, processes and procedures, while enhancing safety for your patients and healthcare workers.

www.BDdiagnosticsUKI@bd.com

BioConnections

As part of any antifungal stewardship programme the use of fungal biomarkers for the early diagnosis of invasive fungal infections is a key factor. Minimising



The FACIS system from BioConnections.

laboratory turnaround time is key to unlocking the potential of β -D-glucan and other biomarkers while ease of use and automation deliver the shortest TATs.

FACIS uses an independent reagent cartridge system with fully automated operation steps. A matching intelligible and multi-functional software system controls the rapid, simple test process and interprets the feedback into quantitative data.

www.bioconnections.net/

bioMérieux

A world leader in the field of *in vitro* diagnostics for more than 55 years, bioMérieux is present in 44 countries and serves more than 160 countries through a large network of distributors.

bioMérieux provides diagnostic solutions (systems, reagents, software and services) that determine the origin of a disease to improve the health of patients. A world leader in microbiology, specialised in immunoassays and leading



Vitek MS Prime from bioMérieux.

pioneer in the syndromic molecular approach, the company is committed worldwide on major public health issues in the field of infectious diseases, such as antimicrobial resistance, sepsis and respiratory infections.

www.biomerieux.com/

Bruker Microbiology & Diagnostics

Bruker's market-leading MALDI Biotyper (MBT) is the globally recognised solution for routine microbial identification.

The company is continuously adding workflows based on the MBT, including MBT Sepsityper for direct identification from positive blood culture, and MBT STAR-BL assays for resistance testing.

Bruker also markets IR Biotyper for strain typing targeting hygiene management, and MICRONAUT for antimicrobial susceptibility testing of bacteria and yeasts. Bruker's molecular testing portfolio comprises assays for virology, mycobacteria and TB testing among other PCR assays and systems.

Your SARS-CoV-2 diagnostic workflow can be simplified by automated extraction using the GenoXtract fleXT. The renowned FluoroCycler XT, with simple, intuitive software, is easy to use and generates reliable and easy-to-interpret results for assays such as Bruker's FluoroType SARS-CoV-2 product line.

www.bruker.com/microbiology



FluoroCycler XT and Bruker's MALDI Biotyper sirius.

Cepheid

Over a decade ago, Cepheid set the standard for innovation in automated molecular diagnostics. The GeneXpert System has been heralded as game-changing by healthcare leaders across the globe, enabling institutions of any size, from small medical clinics to high-volume reference laboratories and hospitals, to access the speed and accuracy of molecular diagnostics.

Cepheid's growing Xpert test menu spans multiple clinical applications including healthcare-associated infections, sexual health, critical infectious disease, virology and oncology.

www.cepheid.com



GeneXpert Xpress cassettes from Cepheid.

Don Whitley Scientific

Don Whitley Scientific (DWS) is best known for its range of world-renowned modified atmosphere workstations. It is proud to present one of its smallest workstations – the A25 – at this year's BSMT conference.

The company is also now well-established in its work with international partners to distribute a variety of automated laboratory solutions. One example of this is COPAN's newly launched UniVerse: a high-throughput system capable of de-capping, re-capping, pipetting and aliquoting from primary tube to secondary tube (or deep well plates) prior to molecular diagnostic testing. Paring perfectly with every downstream molecular biology platform, UniVerse ensures the safety of operators, eliminates human error, provides rigorous traceability and increases productivity.

Also on show will be the latest analytical software for WASPLab, the complete robotic specimen processing system for front-end pre-analytics in microbiology.

Pairing perfectly with WASPLab, DWS is authorised to supply a wide range of COPAN eSwabs, including eSwabs and eNAT.

sales@dwscientific.co.uk

www.dwscientific.com/lab-automation



The A25 anaerobic workstation from Don Whitley Scientific.

EXHIBITION PREVIEW



Flexible molecular screening solutions for infectious diseases from Genetic Signatures.

Genetic Signatures

Genetic Signatures is a molecular diagnostics company, providing flexible molecular screening solutions for infectious diseases. The expansive and flexible menu offers syndromic testing for a broad range of clinically relevant respiratory, enteric, antimicrobial resistance, sexual health, tropical diseases, and atypical pathogens. Flexibility is further enhanced by Genetic Signatures' proprietary 3base technology, providing uniform sample processing for all specimen types and reduced genetic complexity of detecting pathogens. This is particularly beneficial for detecting subtypes or pathogen variants, such as SARS-CoV-2. T

The streamlined and automated workflow supports simplified and flexible multiplexed real-time PCR assays that can detect a large number of pathogens in a single sample, while preserving throughput. Genetic Signatures syndromic testing and automated systems support hospitals to increase diagnostic workflow capabilities and 'time to result'. Automated LIS reporting also supports clinicians to provide rapid and appropriate administration of therapies to improve patient management. Visit the Genetic Signatures' team at BSMT to learn more. <https://geneticsignatures.com/eu/>

Novodiag and Panther systems from Hologic.



Hologic

Hologic is an innovative global medical technology company primarily focused on improving women's health and well-being, and a specialist in high-volume population screening. Hologic Molecular Scalable Solutions are well placed to meet the growing diagnostics testing needs of laboratories of all shapes and sizes. From a single patient rapid result in about an hour to population level screening, meeting the molecular diagnostic needs of laboratories today and in the future.

The Hologic portfolio is anchored by the Panther System, a best-in-class, fully automated, sample-to-result platform. The most recent addition is the Novodiag System, a high multiplex technology that is precision-engineered for simplicity, accuracy and affordability across a broad and growing menu of high- and low-plex assays. It complements the Panther System, along with Panther Scalable Solutions, and expands Hologic's offering, allowing the company to meet customers' growing diagnostic testing needs from small to the largest laboratories. www.hologic.com



Gold Standard Diagnostics' AIX-1000 RPR system, available from Launch Diagnostics.

Launch Diagnostics

Launch Diagnostics was established over 30 years ago as a leading supplier of diagnostic innovation, providing the best solutions for many pathology disciplines. Partnering world-leading manufacturers, Launch continues to supply high-quality diagnostic reagents, instruments and services to health service pathology departments including microbiology, biochemistry, haematology, immunology and virology throughout the UK, Ireland (ACCUSAY Diagnostics) and Europe.

Adapting to the ever-changing needs of the healthcare services, Launch Diagnostics carefully develops the product portfolio with the introduction of the latest technologies such as the fully automated AIX-1000 RPR system from Gold Standard Diagnostics and additional novel products in Liofilchem's AST range.

For further information on the full range of manufacturers and products and to discuss our new instruments and products, join us at the BSMT conference or visit the company's website. www.launchdiagnostics.com

Mast Group

Mast Group is a UK based leading independent European manufacturer and supplier of clinical diagnostic products. Mast Group was among the



Mast Group was among the first companies to commercialise the antibiotic disc.



MWE – 70 years of innovation in pre-analytics.

first companies to commercialise the antibiotic disc, and continues to work with pharmaceutical companies worldwide in the development of new and exciting products.

Less well known is that Mast is the exclusive supplier for FIT testing for the National Bowel Cancer Screening programme in England as well as supporting many trusts with the company's FIT and FITPAC solutions for asymptomatic screening programmes.

<https://mast-group.com/>

MWE

MWE has been supporting the clinical industry worldwide including the UK for 70 years, bringing compliant, innovative and good-quality specimen collection devices to the diagnostics market.

The company's products, such as the Universal Transport Device Σ -VCM and viral transport medium Σ -VIROCULT, along with swabs, have been used globally throughout the pandemic.

At BSMT, MWE will be showcasing a range of products including Σ -MM, an inactivation medium that has proven to

save costs and improve efficiencies in many laboratories including East Kent Hospital NHS Trust. In addition, the team will also be talking about how MWE products are used with various automated systems on the market, and have been validated by customers, for molecular diagnostics.

Visit MWE's stand to discuss how it can help you.

talk2us@mwe.co.uk
www.mwe.co.uk/

Pro-Lab Diagnostics

Pro-Lab Diagnostics is delighted to once again support the BSMT and looks forward to meeting with friends and colleagues during the conference. As the company continues to emerge from the pandemic and re-engage with you all, it certainly has a lot to share. This will include, but certainly not be limited to, Pro-Lab's traditional range, exciting developments in the field of molecular diagnostics with full automation now available, POC sepsis testing, biobanking and much more. There may also be a penguin or two about!

www.pro-lab.co.uk/



The Pro-Lab-Diagnostics' team.



Vivalytic, the all-in-one molecular solution from Randox.

Randox Laboratories

Randox's product portfolio includes a vast molecular diagnostics range that includes Qnostics, QCMD, Discovery, Vivalytic, and more.

Qnostics provides molecular controls for infectious disease testing while QCMD is a world-leading external quality assessment scheme, dedicated to improving the quality of molecular diagnostic assays used in the detection of infectious diseases.

The Vivalytic enables sample-to-answer, cartridge-based molecular diagnostic testing, capable of both Hi-Plex and Lo-Plex. The unique test menu covers a diverse range of respiratory, genitourinary and hospital-acquired infections including COVID-19.

An exciting and fully automated molecular diagnostics analyser, the Randox Discovery, helps to consolidate the normal workload of multiple laboratories into one compact analyser. Randox patented Biochip Technology allows simultaneous detection of hundreds of targets from a single patient sample.

www.randox.com
market@randox.com

R-Biopharm Rhône

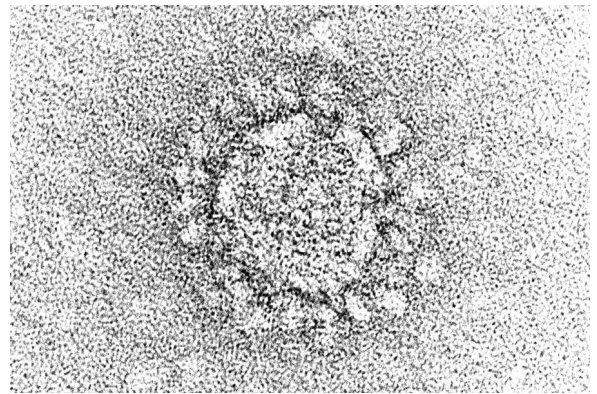
R-Biopharm Rhône is a daughter company of R-Biopharm-AG and has celebrated over 30 years as a leading diagnostics developer and manufacturer.

Using the trademark names RIDA QUICK, RIDA SCREEN and RIDA GENE, the company offers a variety of product technologies. These include rapid tests for pathogen detection, ELISAs and PCR

EXHIBITION PREVIEW



Real-time PCR testing for influenza and SARS-CoV-2 from R-Biopharm Rhône.



Identify and track SARS-CoV-2 mutations with Werfen.

assays covering respiratory including SARS-CoV-2, enterics such as norovirus, and gastroenterology products including therapeutic drug monitoring.

The Microbix range of Quality Assessment Product (QAP) controls that complement users' diagnostic assays is also available.

Visit the R-Biopharm Rhône stand at the BSMT meeting where the team will be happy to discuss the company's range in more detail.

<https://r-biopharm.com/>

Serosep UK

Serosep is proud to be exhibiting several products at BSMT.

EntericBio is the company's molecular system for enteric pathogen detection system including bacterial, viral and parasites targets. EntericBio is fast, reliable and easy to use, handling from one to 46 samples per hour, with results in under three hours.

QuantaMatrix dRAST is a direct from positive blood culture, automated AST system that can run up to 12 samples simultaneous, with full MIC results available in less than six hours.

Serosep is the new home for the Bio-Rad infectious diseases testing portfolio – come and find out products the company covers for fungi, AST, culture and serology. www.serosep.com/

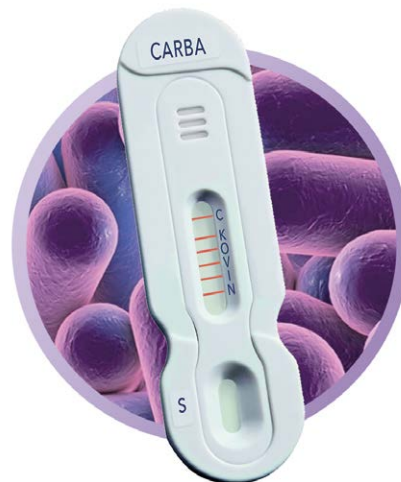
The EntericBio workstation from Serosep.



Una Health

Una Health specialises in rapid microbiology and point-of-care diagnostics providing rapid and reliable solutions that make more efficient use of already-stretched resources. Visit the stand at BSMT to see some of the featured microbiology products including NG Test CARBA 5 – the highly sensitive rapid test for qualitative detection and differentiation of carbapenemases.

Discover Fortress TPHA HAEMAGGLUTINATION (Syphilis) for detection and titration of antibodies to *Treponema pallidum* and the Fortress HEV



Rapid qualitative detection and differentiation of carbapenemases from Una Health.

ELISA – a gold-standard hepatitis E testing method. Learn more about TECHLAB, the non-invasive diagnostic tests for gastrointestinal diseases, *Clostridioides difficile*, protozoan parasites, and other agents of foodborne illness.

Explore KOVA's range of QC and consumables. Find out more about the Veros COVID-19 test, the instrument-free molecular device that provides laboratory-quality results in 15 minutes.

Come and meet our friendly and experienced team and discuss how these diagnostic tests can help you to transform your service and make more efficient use of your resources.

<https://unahealth.co.uk/>

Werfen

Increasing diversity of SARS-CoV-2 variants and potential higher infectivity of new viral strains underlines the need to identify and track mutations across the complete viral genome. GSD NovaType SARS-CoV-2 Detect & ID is a real-time RT-PCR test for the qualitative detection of SARS-CoV-2, and the subsequent identification of variants. The GSD NovaType SARS-CoV-2 ID is intended as a confirmatory test for potential mutants and should be performed on samples positive for SARS-CoV-2 using the GSD NovaPrime SARS-CoV-2 (COVID-19) real-time PCR kit. Further information is available from Werfen.

sales.uk@werfen.com
www.werfen.co.uk

Special thanks must go to Mast Group, Medical Wire and Equipment (MWE), BioConnections, Pro-Lab Diagnostics, bioMérieux UK, Launch Diagnostics, Becton Dickinson (BD), and Don Whitley Scientific (DWS), who have supported most if not all BSMT conferences since 1985.

For more information, visit the BSMT website (www.bsmt.org.uk) or email Valerie Bevan (vbevan@bsmt.org.uk).